



# GMT MONTHLY MEMBERSHIP PROGRESS REPORT

Results as of: 2/29/2020

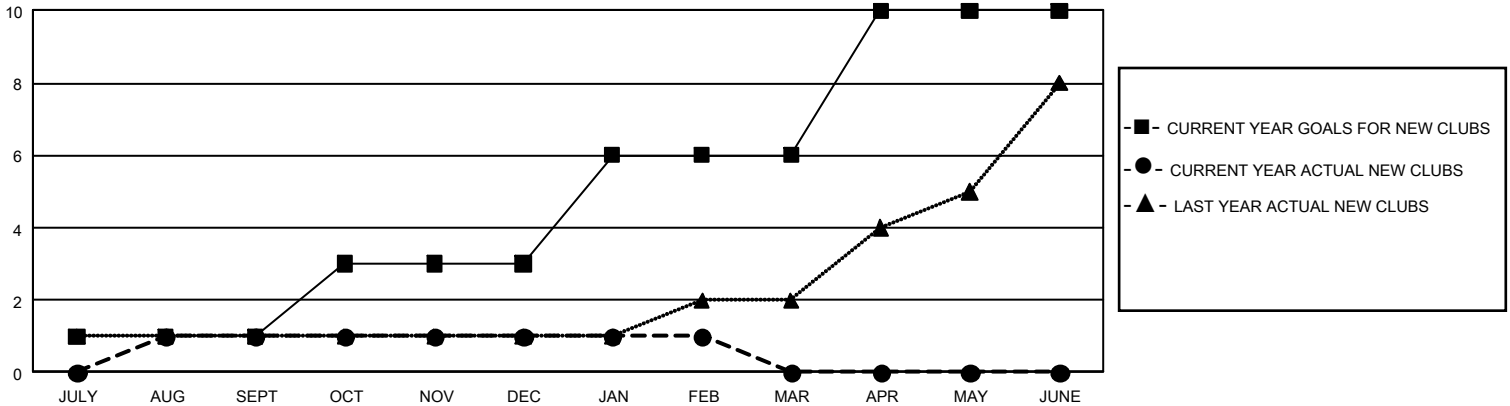
## GMT Constitutional Area 1, Group L

GMT: OPEN

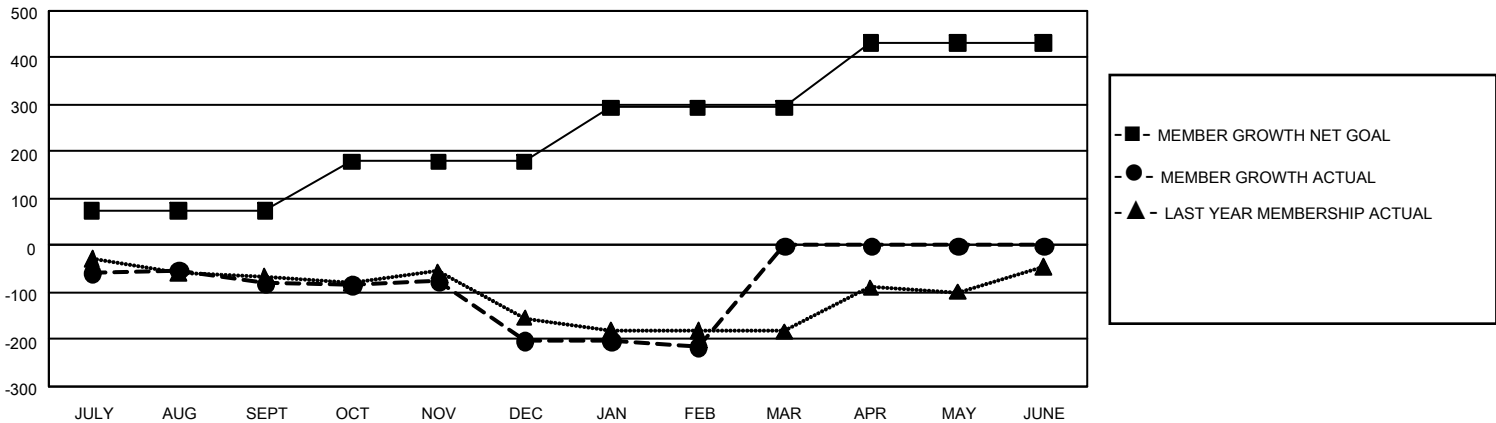
REPORT DOES NOT INCLUDE CLUBS IN UNDISTRICTED AREAS.

Clubs				Members			
RESULTS FOR 2019-2020				RESULTS FOR 2019-2020			
QUARTER	NEW CLUB GOAL	NEW CLUBS	DROPPED CLUBS	QUARTER	MEMBER GROWTH NET GOAL	MEMBER GROWTH ACTUAL	DROPPED MEMBERS ACTUAL (including transfers)
JULY/AUG/SEPT	3	1	1	JULY/AUG/SEPT	219	112	182
OCT/NOV/DEC	6	0	2	OCT/NOV/DEC	318	161	275
JAN/FEB/MAR	9	0	1	JAN/FEB/MAR	345	80	85
APR/MAY/JUNE	12	0	0	APR/MAY/JUNE	414	0	0

**GOALS AND ACTUAL NEW CLUBS CUMULATIVE**



**GOALS AND ACTUAL MEMBERS CUMULATIVE**



<b>DROPPED CLUBS: 4</b>	107 CLUBS OF 230 ADDED 1 OR MORE NEW MEMBERS	<b><u>GENDER DISTRIBUTION</u></b> MALE            3,279 (49.82%) FEMALE         3,303 (50.18%)
<b><u>DROPPED MEMBERS</u></b> DECEASED            58 CLUB CANCELLED    26 OTHER                 458 <hr/> <b>TOTAL                    542</b>	<a href="#">CLICK HERE FOR CUMULATIVE MEMBERSHIP DATA</a>	TOTAL FAMILY UNIT MEMBERS            866  FAMILY MEMBERS PAYING HALF DUES    457